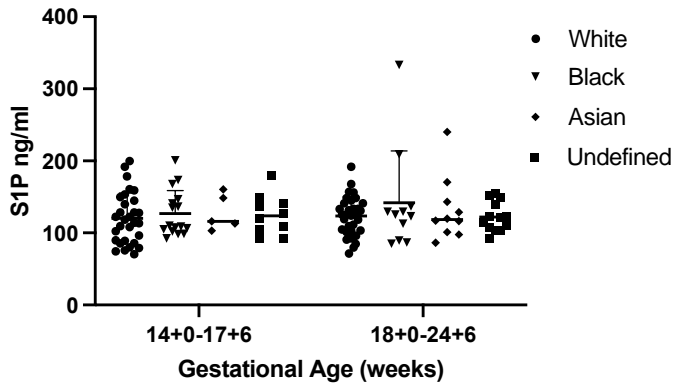


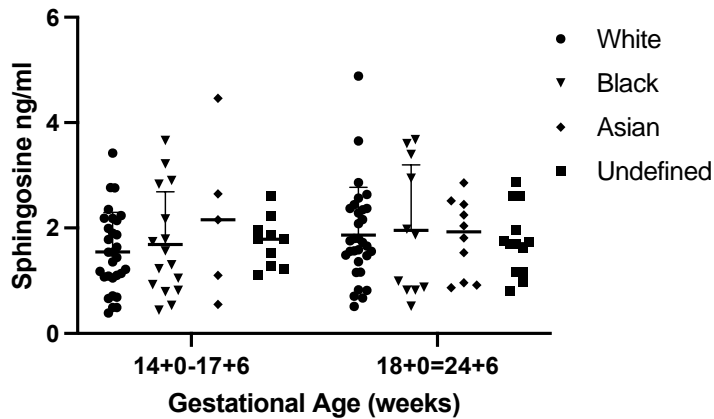
Supplemental Figures

Supplemental Figure 1. Relationship between ethnicity (self-reported White, Black, Asian, and undefined) and maternal plasma S1P (A) and sphingosine (B) concentration. Gestational age range presented in weeks + days. n=61 at 14+0-17+6 weeks and n=65 at 18+0-24+6.

A.

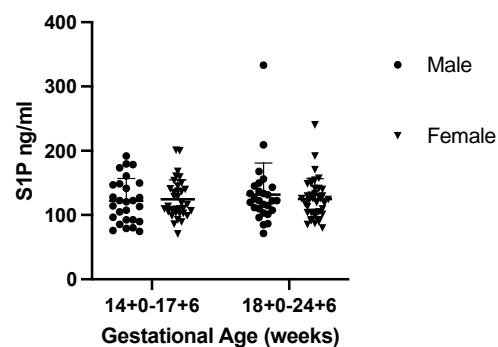


B.

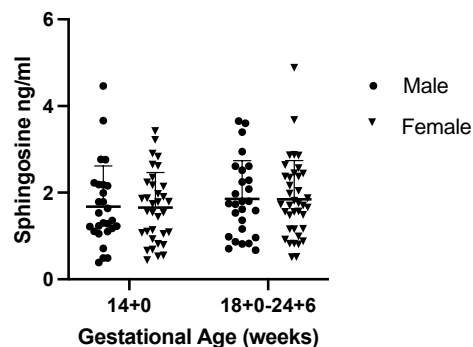


Supplemental Figure 2. Relationship between fetal sex and maternal plasma S1P (A) and Sphingosine (B) concentrations. Gestational age range presented in weeks + days, n=27 at 14+0-17+6 weeks and n=39 at 18+0-24+6.

A.

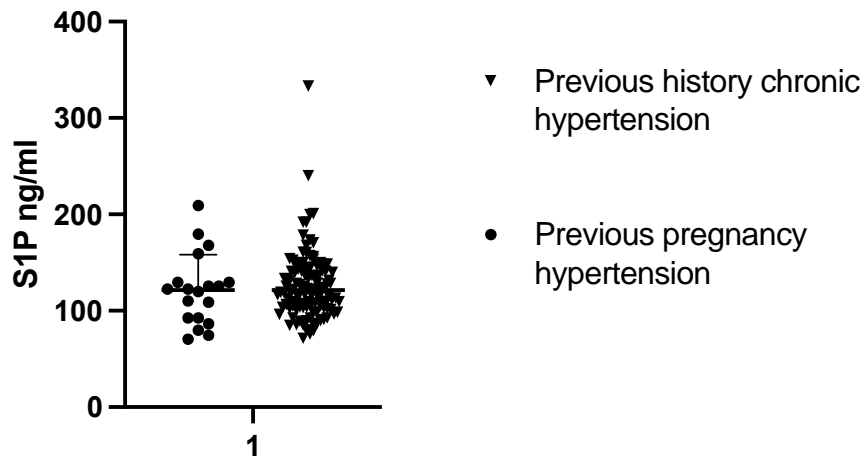


B.

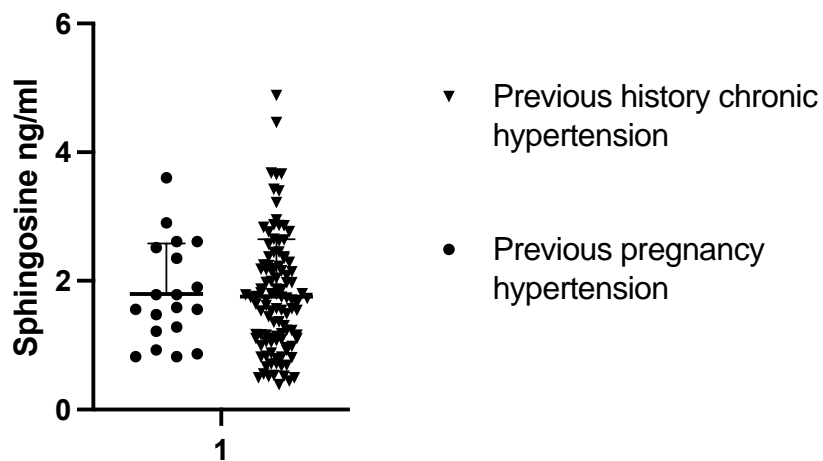


Supplemental Figure 3. S1P and sphingosine concentrations in women with chronic hypertension at booking versus those with a previous history of pregnancy hypertension, n=127.

A.

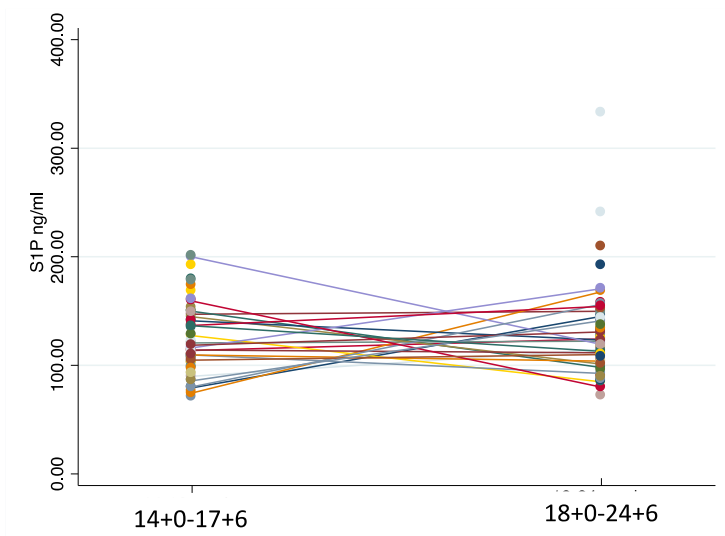


B.

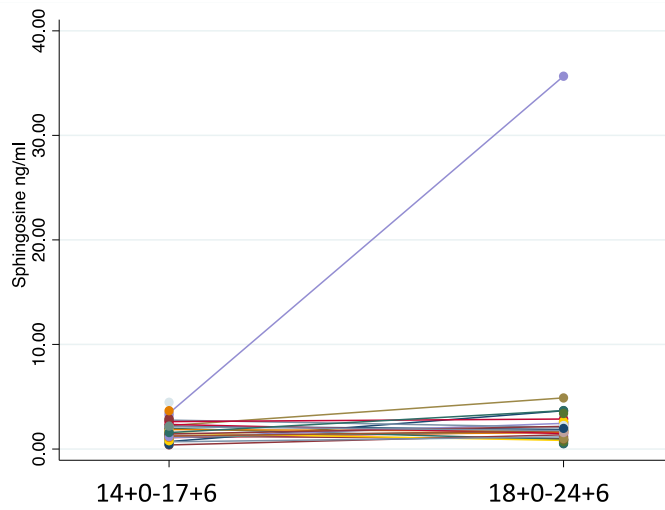


Supplemental Figure 4. Longitudinal measurements of S1P(A) and Sphingosine(B) between 14+0-17+6 weeks and 18+0-24+6 weeks, n=30 for longitudinal measurements linked by lines, unlinked dot indicate single gestation data points. Gestational age range presented in week+days.

A.



B.



Supplemental Figure 5. Scatter plot of Sphingosine vs S1P demonstrating single outlier value of Sphingosine.

